

**GESAMTINSTANDSETZUNG  
ALTE METZG  
KRONENPLATZ 8  
8953 DIETIKON**

**RAUMBUCH  
14. APRIL 2025**



**BAUHERRSCHAFT  
STADT DIETIKON HOCHBAUABTEILUNG  
BREMGGARTNERSTRASSE 22  
8953 DIETIKON**

**ARCHITEKTUR  
ARGE HELEN WYSS & DARIO WOHLER  
DIPL. ARCH. ETH / MSC ARCH. ETH  
HOHLSTRASSE 400  
8048 ZÜRICH**

# RAUMBUCH

## OBJEKT

Alte Metzgerei  
Kronenplatz 8  
8953 Dietikon

## BAUHERR

Stadt Dietikon  
Bremgartnerstrasse 22  
8953 Dietikon

## ARCHITEKT

ARGE Helen Wyss & Dario Wohler  
Hohlstrasse 400  
8048 Zürich  
[www.helenwyss.ch](http://www.helenwyss.ch)  
[www.dariowohler.studio](http://www.dariowohler.studio)

## ORT / DATUM

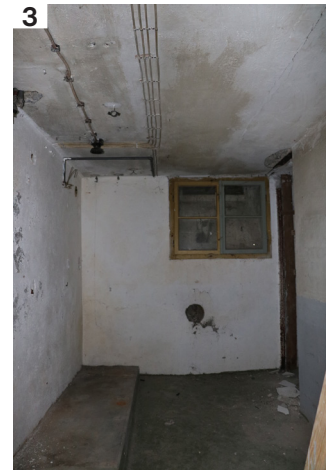
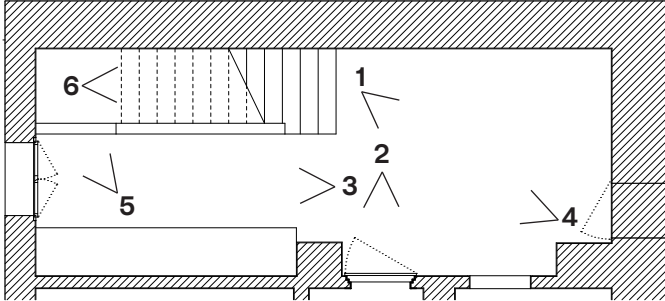
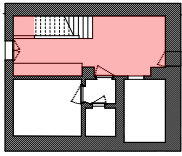
Zürich / Januar 2025





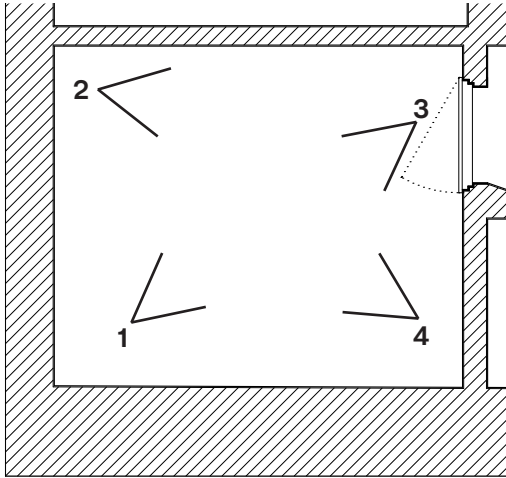
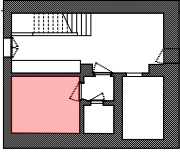
RAUMNUMMER  
RAUMMASS  
RAUM BEST. | NEU  
RAUMBESCHRIEB

UG - 1  
NF 21.13 m<sup>2</sup> | RH 2.365 m  
Verteiler | Verteiler



RAUMNUMMER  
RAUMMASS  
RAUM BEST. | NEU  
RAUMBESCHRIEB

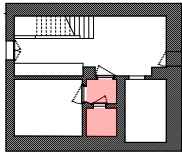
UG - 2  
NF 10.83 m<sup>2</sup> | RH 2.38 m  
Kühlraum | Lager



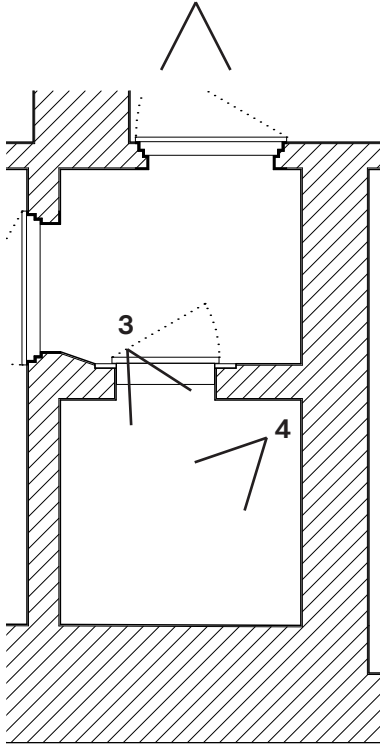


RAUMNUMMER  
RAUMMASS  
RAUM BEST. | NEU  
RAUMBESCHRIEB

UG - 3  
NF 4.59 m<sup>2</sup> | RH 2.23 m  
Kühlraum | Lager

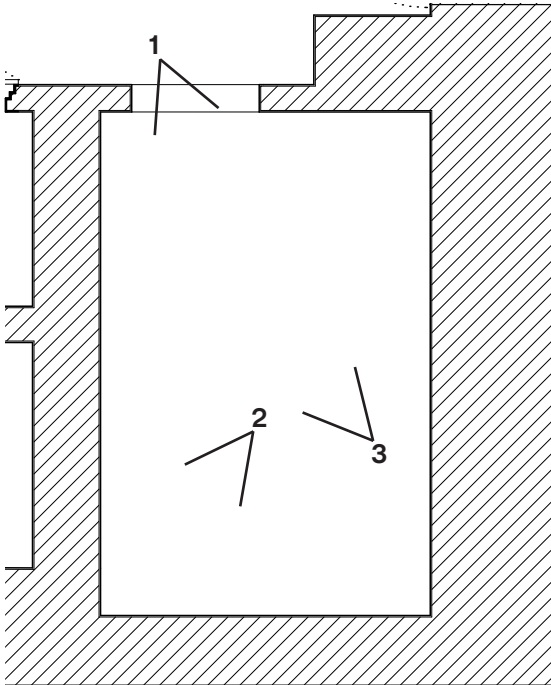
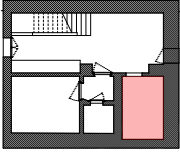


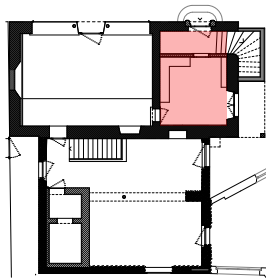
1 & 2



RAUMNUMMER  
RAUMMASS  
RAUM BEST. | NEU  
RAUMBESCHRIEB

UG - 4  
NF 7.26 m<sup>2</sup> | RH 2.23 m  
Lager | Lager



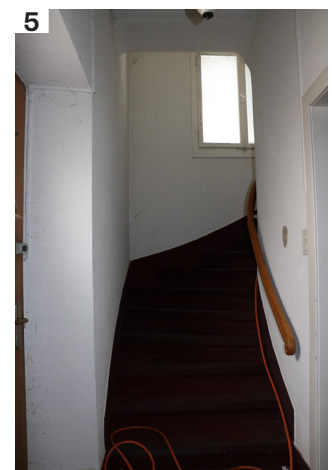
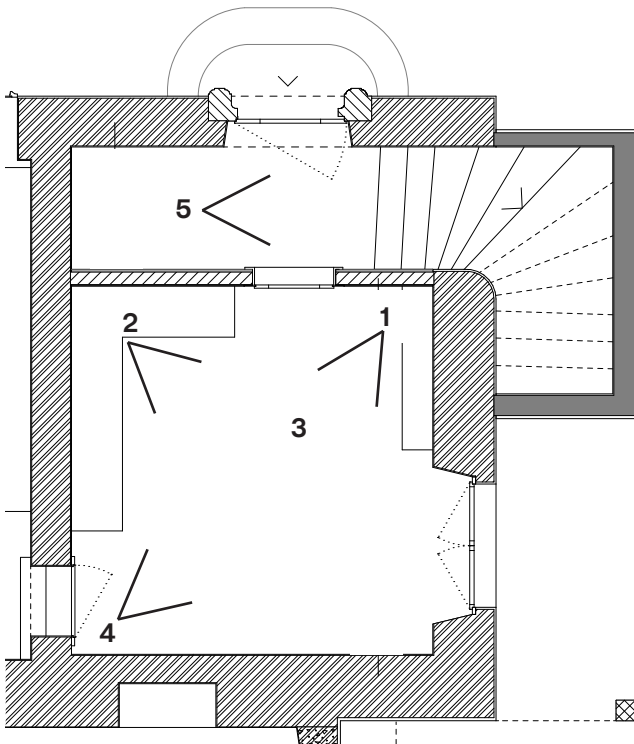


**RAUMNUMMER**  
**RAUMMASS**  
**RAUM BEST. | NEU**  
**RAUMBESCHRIEB**

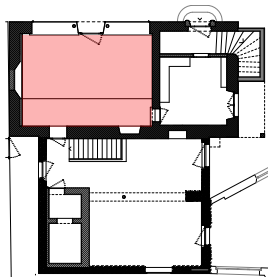
**EG - 1**

NF 15.94 m<sup>2</sup> | RH 3.25 m (3.41 m)

Stube | Eingangsbereich

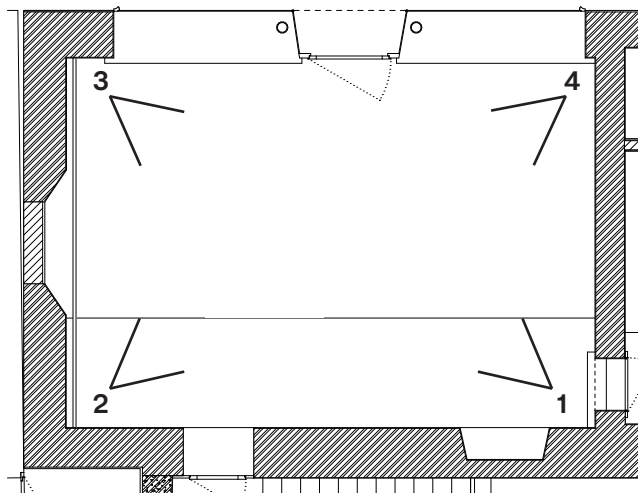


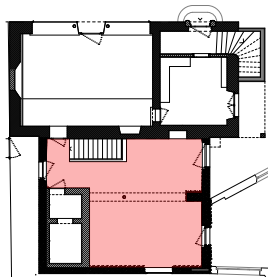




**RAUMNUMMER**  
**RAUMMASS**  
**RAUM BEST. | NEU**  
**RAUMBESCHRIEB**

**EG - 2**  
 NF 34.22 m<sup>2</sup> | RH 3.06 m (3.73 m)  
 Laden | Gastraum & Bar



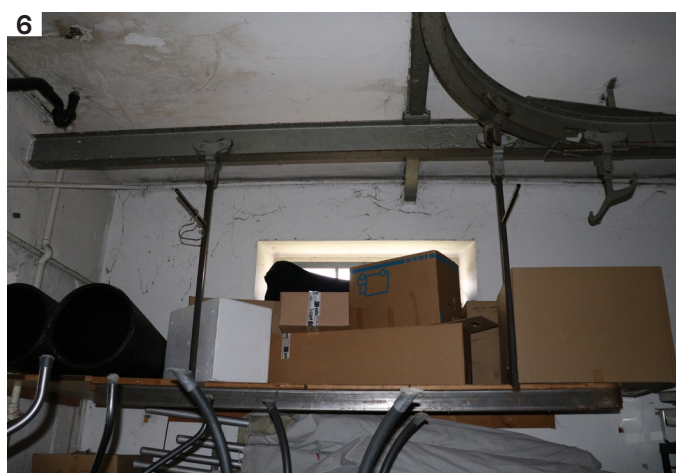
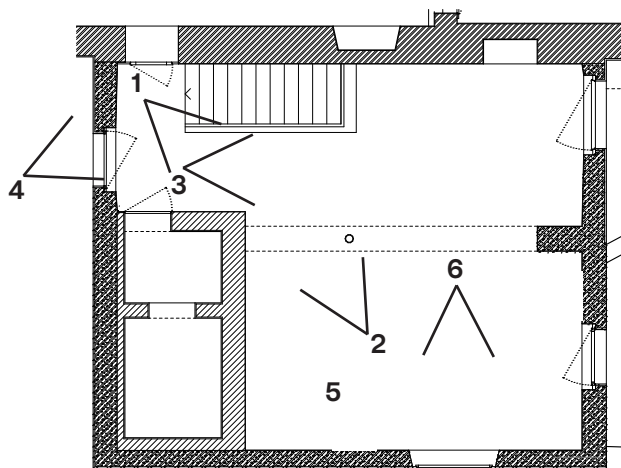


**RAUMNUMMER**  
**RAUM BEST. | NEU**  
**RAUMMASS**  
**RAUMBESCHRIEB**

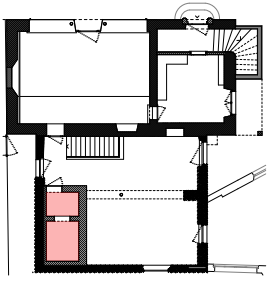
**EG - 3**

Lager | Gastraum & Küche

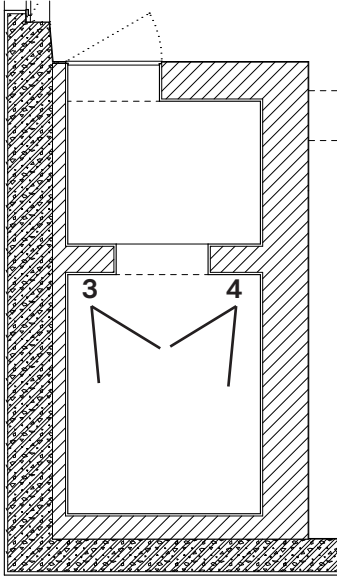
NF 46.16 m<sup>2</sup> | RH 3.715 m







1



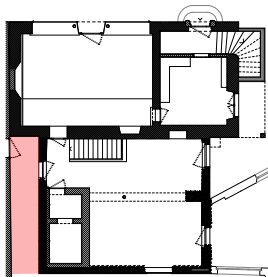
2

RAUMNUMMER  
RAUM BEST. | NEU  
RAUMMASS  
RAUMBESCHRIEB

EG - 4  
Kühlraum | WC-IV  
NF 5.73 m<sup>2</sup> | RH 2.47 m





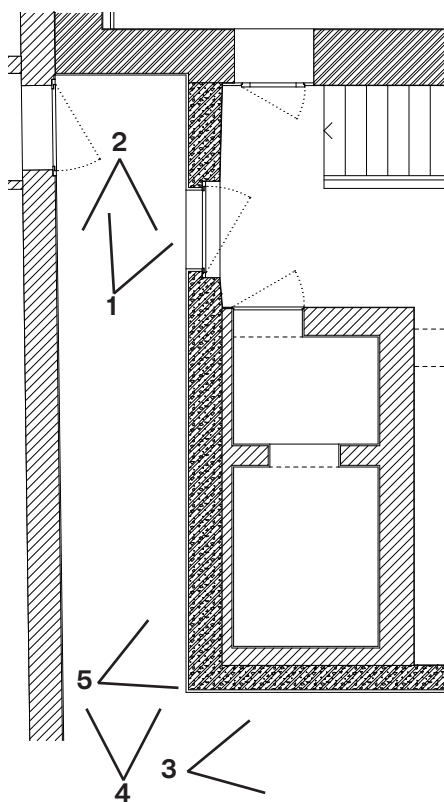


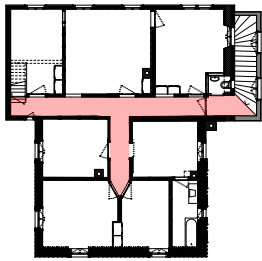
**RAUMNUMMER**  
**RAUM BEST. | NEU**  
**RAUMMASS**  
**RAUMBESCHRIEB**

**AUSSEN**

- | Sitzfläche Aussen

NF 10.80 m<sup>2</sup> | RH 4.40 m

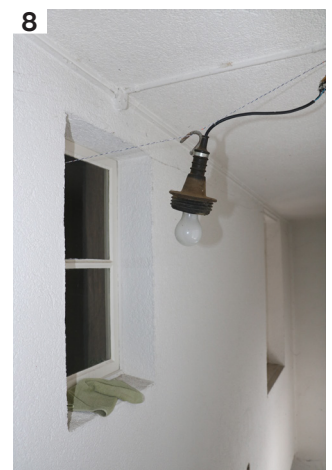
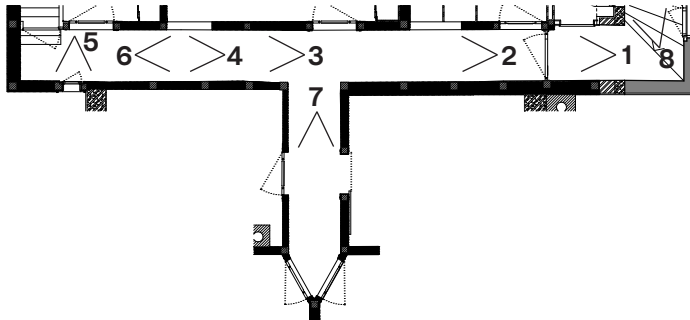




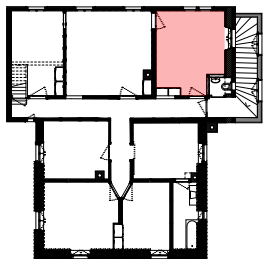
**RAUMNUMMER**  
**RAUM BEST. | NEU**  
**RAUMMASS**  
**RAUMBESCHRIEB**

**OG - 1**

Flur | Flur; Eingang Wh1; Bad  
 NF 16.58 m² | RH 2.16 m; 2.375 m

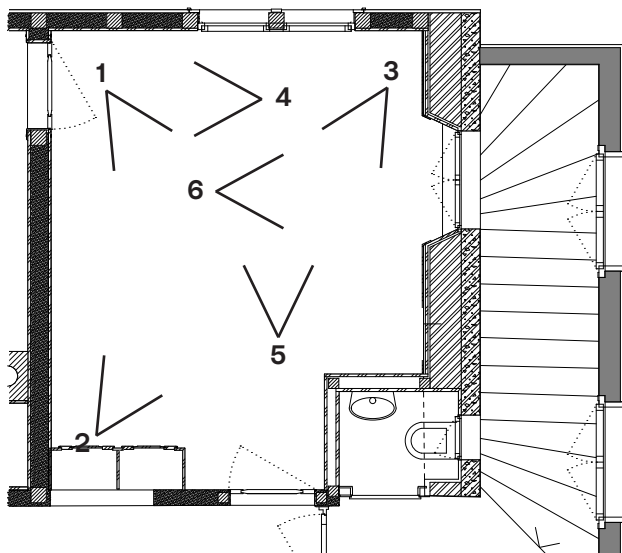




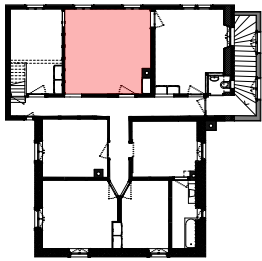


**RAUMNUMMER**  
**RAUM BEST. | NEU**  
**RAUMMASS**  
**RAUMBESCHRIEB**

**OG - 2**  
 Zimmer | Küche  
 NF 15.03 m<sup>2</sup> | RH 2.21 m



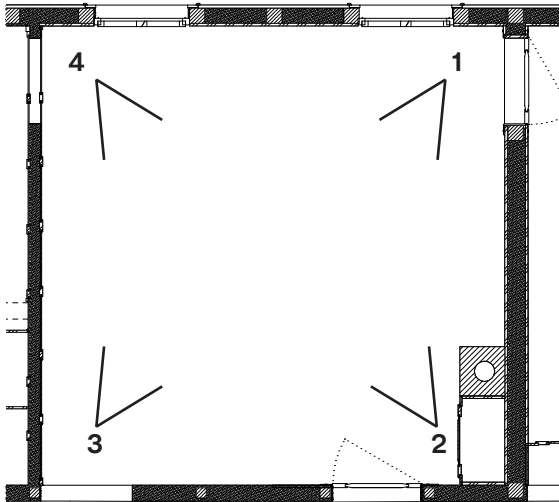


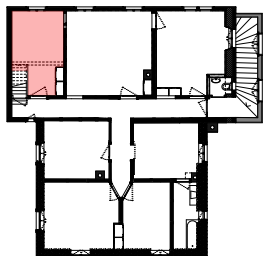


RAUMNUMMER  
RAUM BEST. | NEU  
RAUMMASS  
RAUMBESCHRIEB

OG - 3

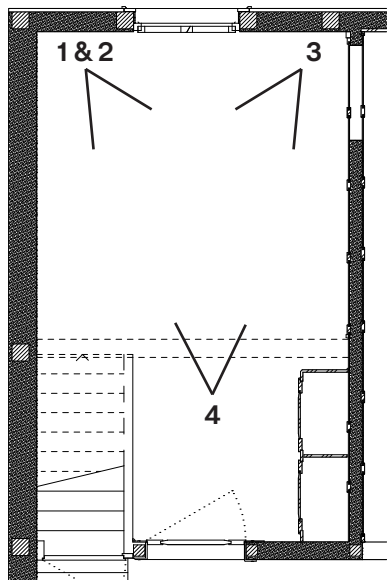
Zimmer | Wohnzimmer  
NF 20.10 m<sup>2</sup> | RH 2.21 m



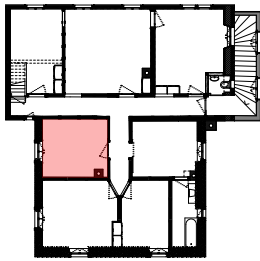


**RAUMNUMMER**  
**RAUM BEST. | NEU**  
**RAUMMASS**  
**RAUMBESCHRIEB**

**OG - 4**  
 Zimmer | Schlafzimmer  
 NF 11.72 m<sup>2</sup> | RH 2.21 m

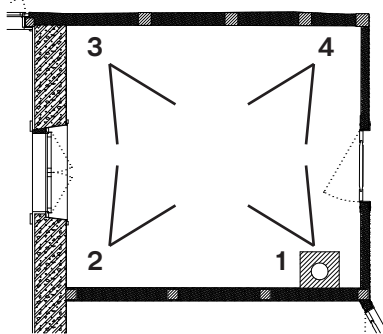




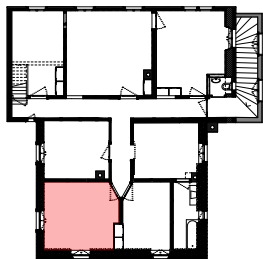


**RAUMNUMMER**  
**RAUM BEST. | NEU**  
**RAUMMASS**  
**RAUMBESCHRIEB**

**OG - 5**  
 Zimmer | Bad  
 NF 10.72 m<sup>2</sup> | RH 2.37 m





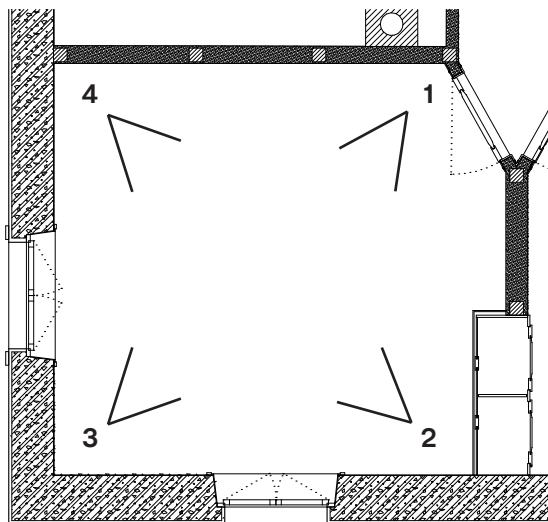


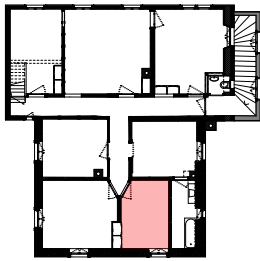
**RAUMNUMMER**  
**RAUM BEST. | NEU**  
**RAUMMASS**  
**RAUMBESCHRIEB**

**OG - 6**

Zimmer | Schlafzimmer

NF 13.79 m<sup>2</sup> | RH 2.58m



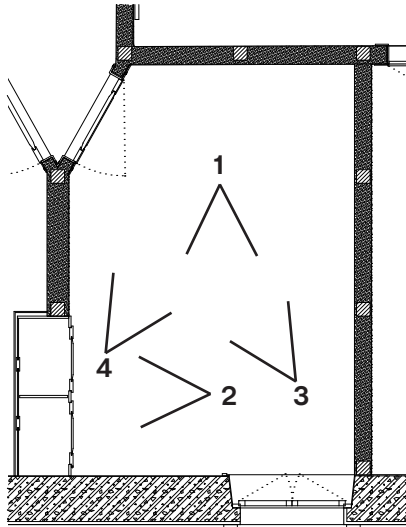


**RAUMNUMMER**  
**RAUM BEST. | NEU**  
**RAUMMASS**  
**RAUMBESCHRIEB**

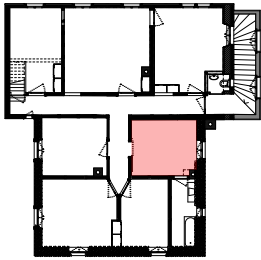
**OG - 7**

Zimmer | Wohnzimmer

NF 8.86 m<sup>2</sup> | RH 2.58m

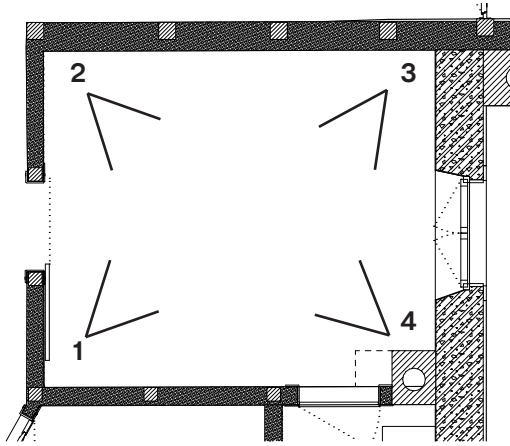




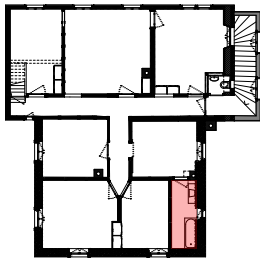


RAUMNUMMER  
RAUM BEST. | NEU  
RAUMMASS  
RAUMBESCHRIEB

OG - 8  
Küche | Küche  
NF 10.16 m<sup>2</sup> | RH 2.37 m





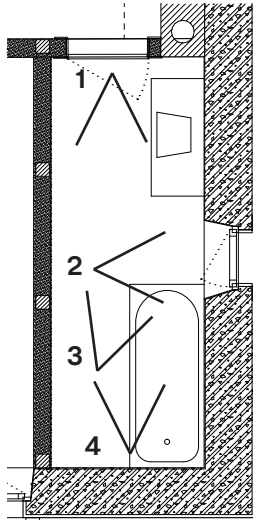


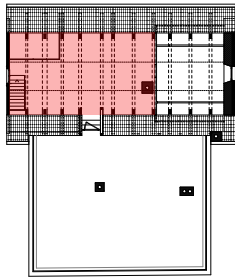
**RAUMNUMMER**  
**RAUM BEST. | NEU**  
**RAUMMASS**  
**RAUMBESCHRIEB**

**OG - 9**

Bad | Wohnzimmer

NF 4.90 m<sup>2</sup> | RH 2.37 m; 2.58 m



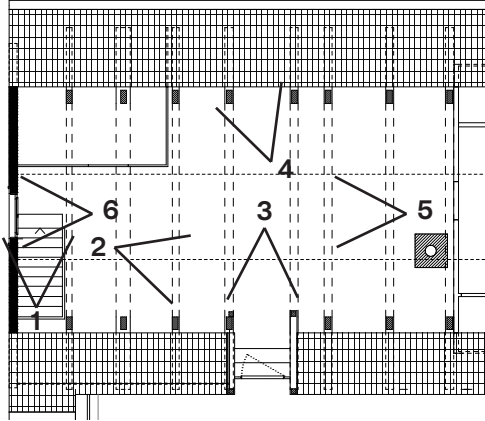


RAUMNUMMER  
RAUM BEST. | NEU  
RAUMMASS  
RAUMBESCHRIEB

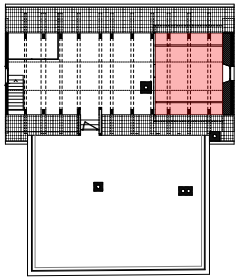
DG - 1

Dachboden | Zimmer

NF 45.30 m<sup>2</sup> | RH 0.40 - 2.45 m

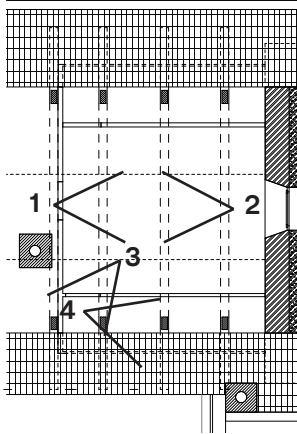




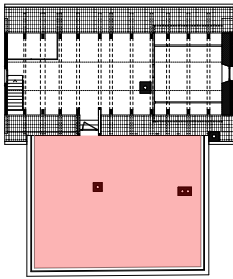


RAUMNUMMER  
RAUM BEST. | NEU  
RAUMMASS  
RAUMBESCHRIEB

DG - 1.1  
Zimmer | Zimmer  
NF 10.50 m<sup>2</sup> | RH 1.10 - 2.10 m







**RAUMNUMMER**  
**RAUM BEST. | NEU**  
**RAUMMASS**  
**RAUMBESCHRIEB**

**DG - 2**  
 Dachterasse | Dachterasse  
 NF 64.70 m<sup>2</sup> | RH Gott

